

Ice Blazer Studless WSL2 on a par with premium brands in Norwegian winter tyre test!

Norges Automobil-Forbund (NAF) is Scandinavia's largest membership and consumer organisation with a committed stated vision of "We will make Norway a safer and better country for road users."

One in ten Norwegians are members, as are one in four of all Norwegian passenger car owners.

In late September 2014, NAF published results of an independent winter tyre test for studless tyres. The Sailun Ice Blazer WSL2 scored very credibly, with a test result equal to the Pirelli Winter Icecontrol, and slightly better than the Dunlop SP Ice Sport, the Vredestein Nord-Trac 2, the Kumho I'Ken KW 31 and much better than the Sunny Snow Master SN3830.

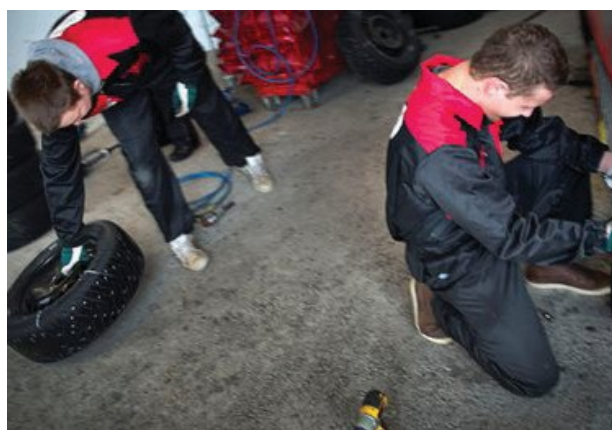


Continued...

Martin West, MD Sailun Tyres (Europe) commented – “We have invested very heavily to ensure that both the quality and value of all Sailun tyres is high – this test further endorses previous results and demonstrates the product efficiency and effectiveness in all types of conditions. We are delighted with these independent test results and they reflect our brand position in a higher tier of tyre products.”



The tests, specifically aimed at handling Nordic winter conditions, and carried out in strictly-monitored professional scenarios, looked a number of measured and subjective assessments:



- Braking
- Acceleration
- Driving Characteristics
- Stability
- Noise
- Rolling Resistance

KARAKTERKORT PIGGFRIE	Vekt %	Bridgestone	Continental	Dunlop	Goodyear	Kumho	Maxxis	Michelin	Nokian	Pirelli	Sailun	Sunny	Vedestein
IS	40 %												
Bremsing	15 %	8	8	5	8	6	7	8	8	7	7	4	6
Akselerasjon	10 %	6	7	5	7	5	7	7	7	6	6	4	5
Kjøreegenskaper	10 %	7	7	5	7	5	7	7	8	6	6	4	5
Kjørefølelse, subjektiv	5 %	7	6	6	7	6	7	8	8	7	7	5	6
SNØ	20 %												
Bremsing	5 %	9	9	8	9	7	9	9	9	9	9	6	9
Akselerasjon	5 %	8	9	9	9	8	9	9	10	9	9	5	8
Kjøreegenskaper	5 %	8	9	8	9	7	9	9	10	9	9	6	8
Kjørefølelse, subjektiv	5 %	7	8	7	9	6	8	8	9	7	7	5	6
VÅT ASFALT	15 %												
Bremsing	5 %	7	7	9	8	8	8	7	6	8	8	10	7
Kjøreegenskaper	5 %	7	7	9	8	8	8	7	7	8	8	10	8
Kjørefølelse, subjektiv	5 %	5	6	8	8	6	8	8	7	6	5	9	8
TØRR ASFALT	10 %												
Bremsing	5 %	6	7	6	7	7	6	7	6	6	6	9	7
Kjørefølelse, subjektiv	5 %	6	8	8	9	7	7	8	9	8	6	9	6
ØKONOMI OG KOMFORT	15 %												
Stabilitet	5 %	9	8	8	10	7	9	8	9	7	8	6	7
Støy	5 %	10	10	8	10	8	9	10	10	10	8	8	8
Rullemotstand	5 %	6	9	7	8	8	8	6	9	5	9	6	8
KARAKTER TOTALT	100 %	7,3	7,8	6,8	8,2	6,6	7,7	7,8	8,2	7,2	7,2	6,1	6,7

Full details relating to the test, the organising body and the results can be found [here](#).