

New Light Truck and SUV Tyre Terramax CVR

Sailun have announced the European availability of a new Light Truck and Sport Utility Vehicle tyre – the Terramax CVR.

The Terramax CVR is an all-season tyre engineered to deliver a combination of comfort and performance on SUV and cross-over vehicles.



The Terramax CVR delivers exceptional handling and stability meeting the demands of today's SUV and crossover vehicles without compromising ride comfort.

A staggered tread block design provides a quiet, superior ride while full-depth sipes deliver excellent all weather traction throughout its long life.



Designed with crossover vehicles in mind, the Terramax CVR features 4 deep, wide circumferential grooves to evacuate water quickly.

Specially formulated compound for enhanced tread life, the tyre's characteristics use the latest in environmentally friendly processes and materials.

The Terramax CVR has the following benefits:

- Smooth, quiet ride and comfort for highway driving
- Top all-round performance on wet and dry
- Stable drive and excellent ride and handling at high speeds
- Durable and long-lasting structure
- Suitable for partial off-road usage
- H, V, W rated construction

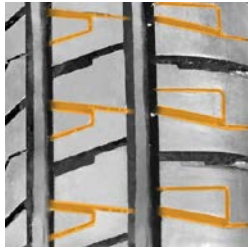
Compliant with REACH regulations, the Terramax CVR is available in 18 sizes – up to a 20 inch width:

205/70R15 96H
235/70R16 106H
265/70R16 112H
215/65R16 102H XL
225/65R17 102H
215/60R17 96H
235/60R18 103V
235/55R18 100V
255/50R19 107V XL

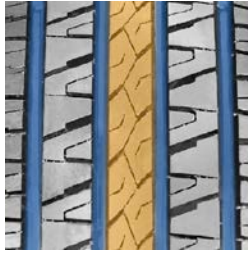
215/70R16 100H
245/70R16 111H XL
235/60R16 100H
215/70R16 102H
235/65R17 108H XL
235/55R17 103V XL
225/55R18 98V
255/55R18 109V XL
255/50R20 109W XL



In addition the Terramax CVR has the following features:



V-sipes with activators for increased traction in all weather conditions



Interlocking centre rib designed for a smooth and controlled ride with 4 deep channels to help expel water



Environmental Friendly Technology: EFT green technology utilising the latest eco-friendly materials and

For further Sailun marketing and press release information, please contact Richard Nicholson either by email (rnicholson@sailuntyre.eu or Richard@2112marketing.com) or telephone (+44 [0] 7917 402112).

 **SAILUN**