



COMMERCIAL WINTER TYRE



ENDURE WSL1



ENDURE WSL1

Winter Snow Tyre specifically designed for commercial light trucks. Specially designed formula used to conquer winter weather; provides optimal grip and stopping power on snow and ice.



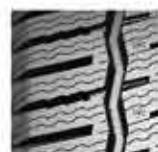
Sidewall protection designed to resist against sidewall impacts and kerbing wear.



Main zigzag groove design and jagged shoulder grooves effectively drain water and snow for greater handling in wet and snowy weather conditions.



Staggered tread blocks improve handling safety while also providing greater traction.



Greater load bearing capability. Large block pattern improves load carrying capabilities and greater handling performance.



Rim	SIZE	LI	SR	XL	Labelling	Tread Depth (mm)	Standard RIM (inch)	Section Width (mm)	Overall Diameter (mm)	Max Load (kg)	Pressure (kpa)	SW	Rim Protector
14	175/65R14C	90/88	T	-	E/E/7B/2	9.6	7J	177	584	600/560	375	BSW	-
14	195R14C	106/104	R	-	E/E/7B/2	10	8J	198	666	950/900	450	BSW	-
14	185R14C	102/100	R	-	E/E/7B/2	9.6	8J	188	650	850/800	450	BSW	-
15	195/70R15C	104/102	R	-	E/E/7B/2	10	7 1/2J	201	655	900/850	450	BSW	-
15	225/70R15C	112/110	R	-	C/E/7B/2	10	8J	228	697	1120/1060	450	BSW	-
15	205/65R15C	102/100	R	-	E/E/7B/2	10	6J	209	647	850/800	375	BSW	-
15	205/70R15C	106/104	R	-	E/E/7B/2	10	8 1/2J	209	669	950/900	450	BSW	-
15	215/70R15C	109/107	R	-	E/E/7B/2	10	5J	221	683	1030/975	450	BSW	-
16	235/65R16C	121/119	R	-	C/E/7B/2	10	7 1/2J	240	712	1450/1360	575	BSW	-
16	195/75R16C	107/105	R	-	E/E/7B/2	10	7J	196	698	975/925	475	BSW	-
16	205/65R16C	107/105	T	-	E/E/7B/2	10	7J	209	672	975/925	475	BSW	-
16	215/75R16C	116/114	R	-	C/E/7B/2	10	7J	216	728	1250/1180	525	BSW	-
16	185/75R16C	104/102	R	-	E/E/7B/2	9.6	8J	184	684	900/850	475	BSW	-
16	195/60R16C	99/97	T	-	E/E/7B/2	10	8J	201	640	775/730	375	BSW	-
16	195/65R16C	104/102	R	-	E/E/7B/2	10	8 1/2J	201	660	900/850	475	BSW	-
16	205/75R16C	113/111	R	-	C/E/7B/2	10	5.00B/5J	203	714	1150/1090	525	BSW	-
16	215/60R16C	103/101	T	-	E/E/7B/2	10	5J	221	664	875/825	375	BSW	-
16	215/65R16C	109/107	T	-	E/E/7B/2	10	5J	221	686	1030/975	475	BSW	-
16	225/65R16C	112/110	R	-	C/E/7B/2	10	7 1/2J	228	698	1120/1060	475	BSW	-
16	225/75R16C	121/120	R	-	C/E/7B/2	10	8J	223	744	1450/1400	575	BSW	-